

# MEXT Scholarship Info Session

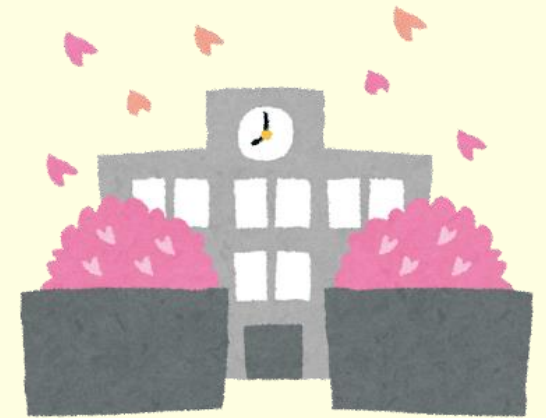
April 2, 2025

April 3, 2025





# Part I: About the MEXT Scholarship



# What is the MEXT Scholarship?

- Prestigious, fully funded scholarship to support international students pursuing higher education in Japan
- Offered by the government of Japan to promote relations between Japan and the students' home countries
- “Study in Japan, in your field” – open to all fields of study!

Scholarship Type	Target students	Degree earned	Length of study (year)
Undergraduate studies	High school graduate	Bachelors	4 to 6 (for med/vet/dentistry/pharm studies)

# Why MEXT?



- You can study in Japan!
- Prestigious scholarship with strong support
- Many alumni → build network for career
- Alleviate financial worries so you can focus on your studies and enjoying life in Japan



# Eligibility

	Undergraduate	Japanese	Research
Nationality	A country with diplomatic relations with Japan (like Canada). Applicants cannot hold Japanese nationality at the time of application		
Age	Exact age and birthday cut offs can be found in the 2026 application guidelines when released		
Academic background	Completed 12 years of schooling (or equivalent)	Undergraduates majoring in Japanese language/culture. Completed at least 1 year of studies.	Hold a Bachelors or 16 years of schooling for Master's course. Hold a Master's or professional degree for Doctoral course.
Japanese Language	Be willing to learn and carry out studies in Japanese	Sufficient to receive education in Japanese	Be willing to learn
Health	No physical or mental conditions that will hinder study in Japan		

# What is covered?

- Round trip airfare to Japan and back
- Tuition covered
- Monthly stipend

Scholarship Type	Monthly stipend
Undergraduate studies	117 000 (~\$1 050 CAD)
Japanese studies	117 000 (~\$1 050 CAD)
Research studies	143 000 for Masters (~\$1 300CAD) 145 000 for PhD (~\$1 315CAD)



# COL in Japan, is the scholarship enough?

Expense	Cost (national average)	Cost in CAD	Tuition covered by MEXT, research-related costs usually covered by university	
<del>Study and Research</del>	<del>¥45 000</del>	<del>\$410</del>		
Transportation	¥5 000	\$45		
Food	¥28 000	\$255	Scholarship Type	Monthly stipend
Rent	¥35 000	\$320	Undergraduate	117 000
Utilities	¥7 000	\$63	Japanese	117 000
Health insurance/Medical	¥3 000	\$25	Research	143 000 for Masters 145 000 for PhD
Entertainment	¥6 000	\$54		
Others	¥9 000	\$80		
Total	<del>148 000</del> → ¥103 000	\$935		

- Kashiwa city in Chiba with ~¥57,000 rent, MEXT stipend was more than enough for me from 2020-2023





# How to apply + timeline

- Apply through nearest Japanese diplomatic mission (for AB, SK, Manitoba, NWT and NU – apply through the Consulate-General of Japan in Calgary)



Conducted at your home country's (passport) diplomatic mission

	Application opens	Application deadline	Exam & interview	Final acceptance	Departure
Undergraduate <b>Opens soon!</b>	Around Apr	End-May	Jun-Jul	Dec-Jan	Apr
Japanese (2026 applications closed)	Dec-Jan	Early Feb	Mid-Feb	Aug	Sep
Research <b>Opens soon!</b>	Around Apr	Mid-May	Jun-Jul	Jan-Feb	Apr or Oct



# What do you need to apply?



	Undergraduate	Japanese	Research
➡ Application form	O	O	O
➡ (University) placement preference form	O	O	O
Transcript	O	O	O
Proof of graduation/enrolment confirmation	O	O	O
Recommendation letter	O	O	O
➡ Medical check up certificate	O	O	O
Field of study and research plan			
Document proving 1 year of Japanese studies		O	

# Part II: Joli's Experience as a MEXT Research Studies Recipient



# MEXT RESEARCH STUDIES 2020 to 2023



Master of Integrated  
BioScience



The University of Tokyo



Graduate School of  
Frontier Sciences



DNA sequencing of  
marine fungi during a  
spring phytoplankton  
bloom



Research cruise!



Graduating during  
Sakura season

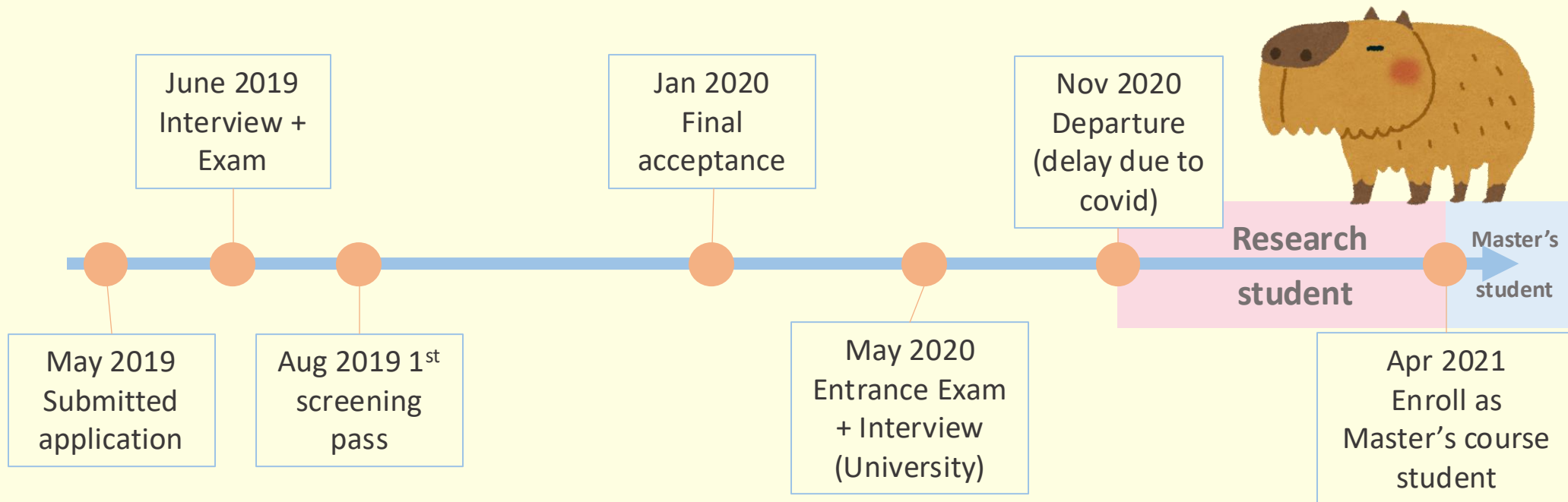


Kouyou:  
autumn leaves



Otsuchi in  
Iwate

# Application and timeline



- Original departure was Apr 2020, but delayed to Nov because of COVID
- Graduated in Mar 2023
- 2 years Master's course student, ~0.5 years as research student

# Henry's Experience as a MEXT Research Studies Recipient

## Dr. Henry Tsang

Registered Architect

Chair & Professor of Department of Architecture, Athabasca University

President, MEXT Scholarship Alumni Association of Prairie Provinces

Visiting Professor, The University of Tokyo





# Japan, Canada & Me



UTokyo Graduation 2006



Wedding i 2017



Nihon Sekkei Work Life



Henry Tsang, MEXT Alumni and Ship for World Youth - "Japan, Canada, & Me"



"Japan, Canada and Me" interview as part of Canada-Japan 90 years.

- MEXT Graduate Scholarship Recipient 2002
- Ph.D., The University of Tokyo 2002-2006
- Worked at Nihon Sekkei 2006-2012
- Ongoing relationship with Japan for over 23 years
- Back in Japan again now!

# Networking & Diplomatic Activity

- JICA International Cooperation projects all over the world 2006-2012
- Japan Tohoku Earthquake Reconstruction 2011
- Ship for World Youth Leaders (SWY) 2017
- SWY Alumni Association
- MEXT Alumni Association



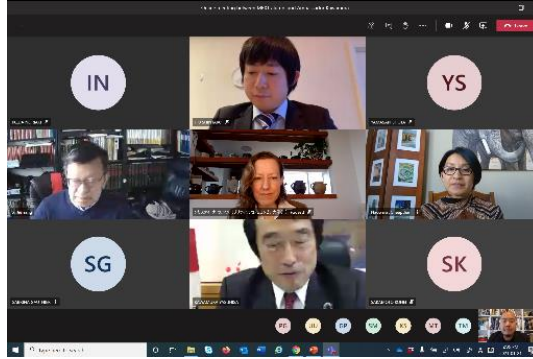
JICA International Collaboration Projects



Japan Tohoku Earthquake Reconstruction



MEXT Meeting with Japanese Consul General Kobayashi in Calgary



MEXT Discussion with Japanese Ambassador Kawamura



Ship for World Youth Meeting with Prime Minister Shinzo Abe



MEXT Info Sessions in Montreal and Calgary



MEXT Alumni Association



# Cultural and Academic Exchange Activity

- Volunteering at Japanese Community Associations
- Yosakoi Dance Team
- Japan-Canada Exchange Programs (SWY, Kakehashi, University)
- Japan Studies Association of Canada
- UTokyo Alumni Association of Canada
- New Calgary Japanese Community Centre



## Calgary Japanese Community Centre

Modern Office of Design + Architecture in collaboration with Henry Tsang Architect

by Canadian Architect On Dec 1, 2020

Share f t in

WINNER OF A 2020 CANADIAN ARCHITECT AWARD OF EXCELLENCE

"This is a quiet project that creates a wonderful space in the centre. It does a lot of things very beautifully and almost effortlessly, with its approach to structure, light, and fitting into its urban context. Some of the spaces are really fantastic, like the main hall opening up into the garden, even if there are other moments in the plan that are a little awkward based on the circular plan." – Susan Fitzgerald, Juror



Montreal's Japan Matsuri



Canadian delegation to Japan on SWY



UTokyo Alumni Association of Canada (Vancouver)



Japan Studies Association of Canada Conference (Next in Lethbridge 2025)



Calgary Yosakoi Dance Team at the Stampede Parade

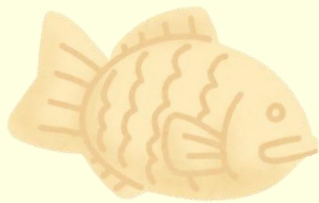


New design for the Calgary Japanese Community Centre





# Part III: Tips + Q & A



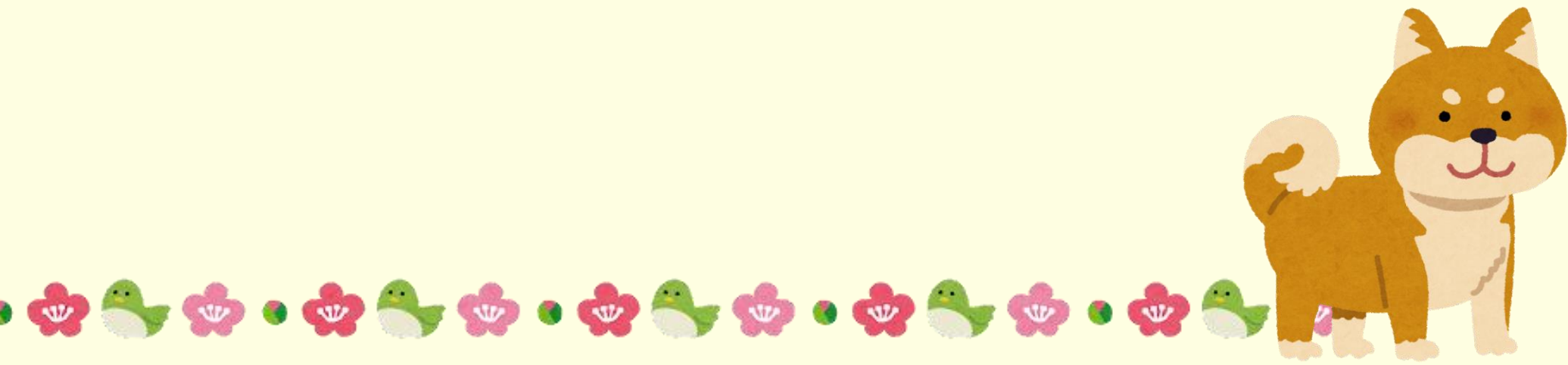
# Tips – ① University preference form

- Invest lots of time into the placement preference form for your top 3 university choices



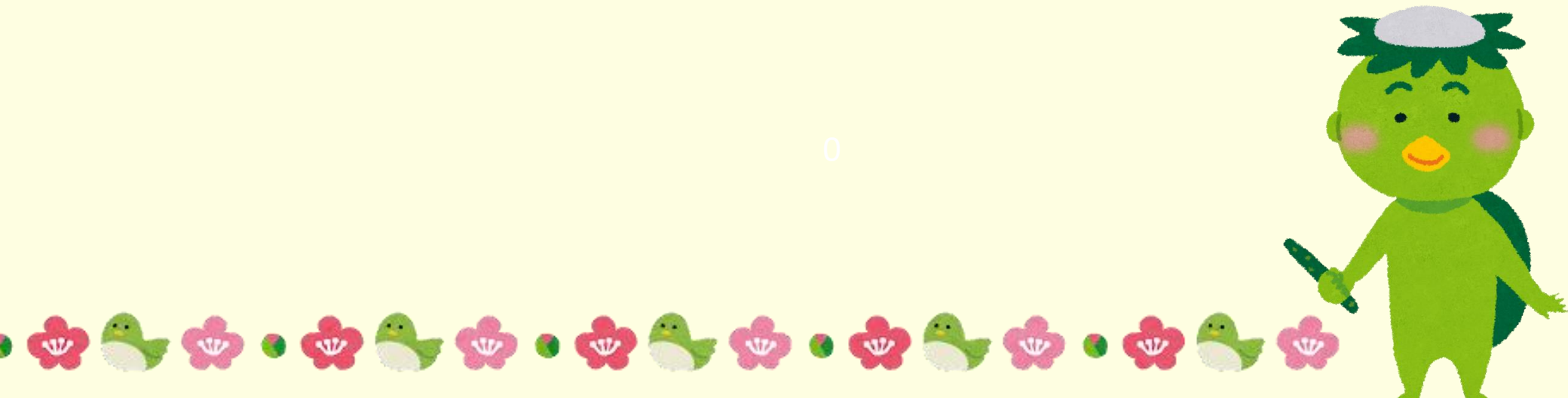
# Tips – ② Application questions

- Short answers on the application form are very important!



## Tips – ③ Learn Japanese

- Although Japanese knowledge is not required for all programs, I highly recommend studying up on it!



# Questions & contact

You can email the Consulate-General of Japan in Calgary, they were very friendly and helpful when I applied:

[info@cl.mofa.go.jp](mailto:info@cl.mofa.go.jp)

